

# GT-3500GE

APPLICABLE MODEL FROM SERIAL NO.1540~



FIG.5 IMPACT MECHANISM-EXPLODED DIAGRAM DRAWING

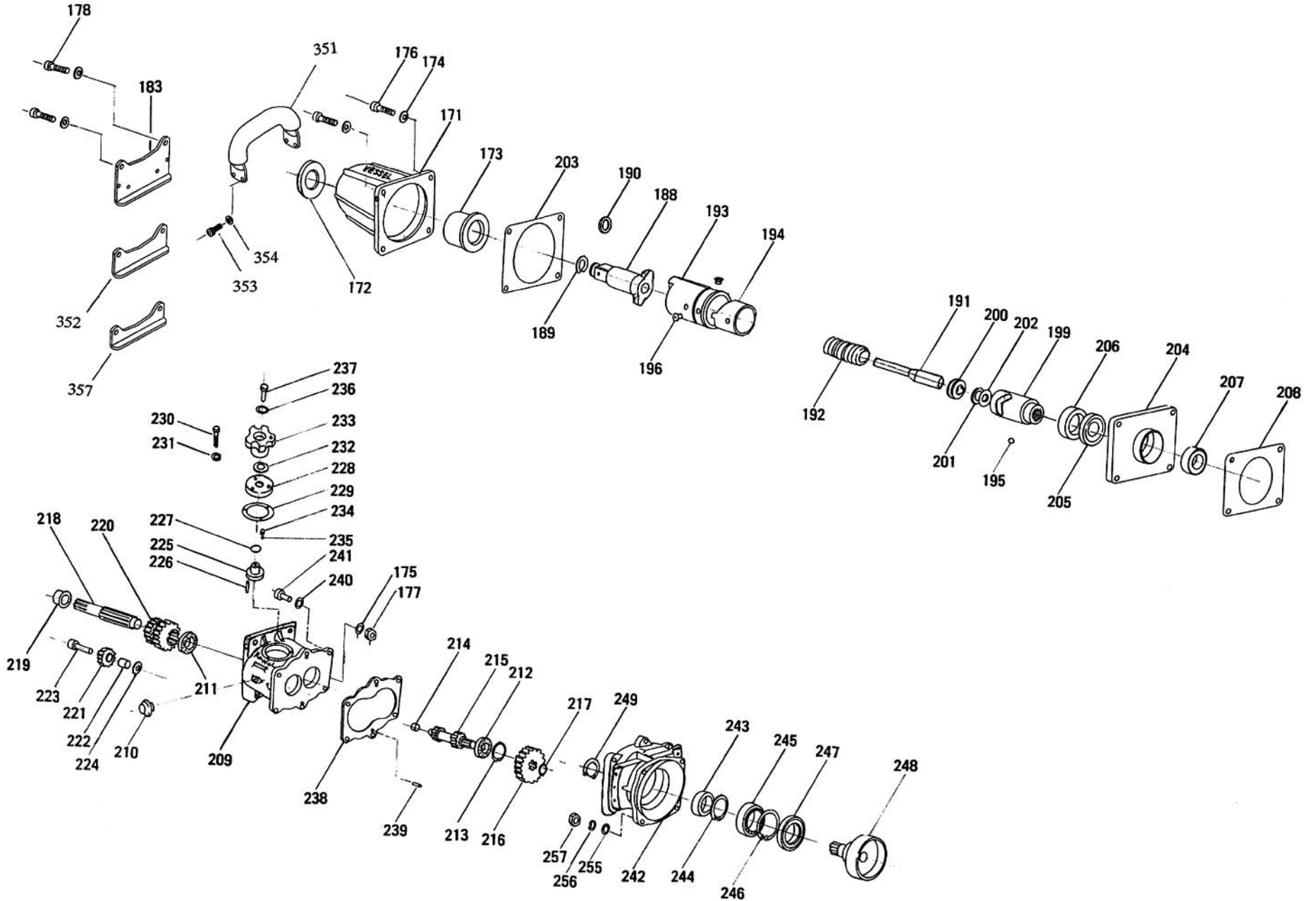


FIG.5 IMPACT MECHANISM-EXPLODED DIAGRAM DRAWING

## Impact Mechanism-Parts List

Index No.	Part Name	Number Required	Index No.	Part Name	Number Required	Index No.	Part Name	Number Required
171	HAMMER HOUSING COMPLETE (INDEX NO.171, 172 AND 173)	1	217	SNAP RING STW-16	1	351	D-HANDLE ANTI-VIBRATION RUBBER COVERED	1
172	OIL SEAL AG2044E1	1	218	SHAFT, BEARING COMPLETE ( INDEX NO.218 AND 219)	1	352	FOOT REST SHORT 22mm	1
173	BUSHING, PRESS-IN TO INDEX NO.171	1	219	BUSHING, BEARING SHAFT	1	353	HEX, CAP BUTTON BOLT M6X16	4
174	WASHER 2H-M8, JAGGED SPRING	4	220	GEAR CLUSTER	1	354	WASHER 2H-M6, JAGGED SPRING	4
175	WASHER M8, SPRING	3	221	PLANETARY GEAR COMPLETE ( INDEX NO.221 AND 222)	1	357	FOOT REST SHORT 15mm	1
176	HEX. CAP BOLT M8X45	3	222	BUSHING, PLANETARY GEAR	1			
177	U-NUT M8, HAMMER HOUSING	3	223	PLANETARY PIVOT	1			
178	HEX. CAP BOLT M8X50	1	224	PLANETARY SPACER	1			
183	FOOT REST LONG	1	225	GEAR SELECTOR COMPLETE ( INDEX NO.225 AND 226)	1			
188	ANVIL COMPLETE ( INDEX NO.188, 189 AND 190)	1	226	SPIRAL PIN 5 IN DIA.X26, GEAR SELECTOR	1			
189	RING, RETAINER	1	227	O-RING N14, GEAR SELECTOR	1			
190	O-RING P18, RETAINER RING	1	228	GEAR FLANGE	1			
191	CENTRAL SHAFT	1	229	PACKING, GEAR FLANGE	1			
192	SPRING, RETURN	1	230	HEX. CAP BOLT M5X10	3			
193	HAMMER COMPLETE ( INDEX NO.193, 194, AND 196)	1	231	WASHER 2L-M5, JAGGED SPRING	3			
194	CAM PLATE	1	232	WASHER WW-16, SPRING	1			
195	BALL, ROLLER 13/32 DIA.	2	233	LEVER, GEAR CHANGE	1			
196	PLUG	4	234	RETAINER SPRING S3.8x7x0.6x6	1			
199	CLUTCH	2	235	STEEL BALL DIA.4	1			
200	BEARING NSK51104, THRUST	1	236	WASHER M6, SPRING	1			
201	SPACER	1	237	HEX. CAP BOLT M6X20	1			
202	THRUST	1	238	GASKET, GEAR CASE	1			
203	GASKET, HAMMER HOUSING	1	239	PIN 4 IN DIA. X13.8	2			
204	RING FLANGE COMPLETE ( INDEX NO.204, 205,206 AND 207)	1	240	WASHER 2H-M6, JAGGED SPRING	6			
205	OIL SEALSC30527	1	241	HEX. CAP BOLT M6X25	6			
206	BEARING 6007VV, BALL	1	242	CLUTCH SUPPORT FLANGE COMPLETE (INDEX NO.242,243,244,245,246 AND 247)	1			
207	BEARING 6006, BALL	1	243	BEARING 16005, BALL	1			
208	GASKET, RING FLANGE	1	244	SNAP RING IRTW-47	1			
209	GEAR CASE COMP.( INDEX NO.209, 210, 211 AND 214)	1	245	BEARING 6907, BALL	1			
210	OIL POT PORT PF3/8-19	1	246	SNAP RING IRTW-55	1			
211	BEARING 16004, BALL	1	247	OIL SEAL SC35558	1			
212	BEARING 16003, BALL	1	248	CLUTCH RING	1			
213	SNAP RING IRTW-35	1	249	SNAP RING STW-25	1			
214	BUSHING, SELECTOR SHAFT	1	255	WASHER 2H-M6, JAGGED SPRING	4			
215	SHAFT, SELECTOR	1	256	SPRING WASHER M6	4			
216	GEAR	1	257	HEX. NUT M6	4			