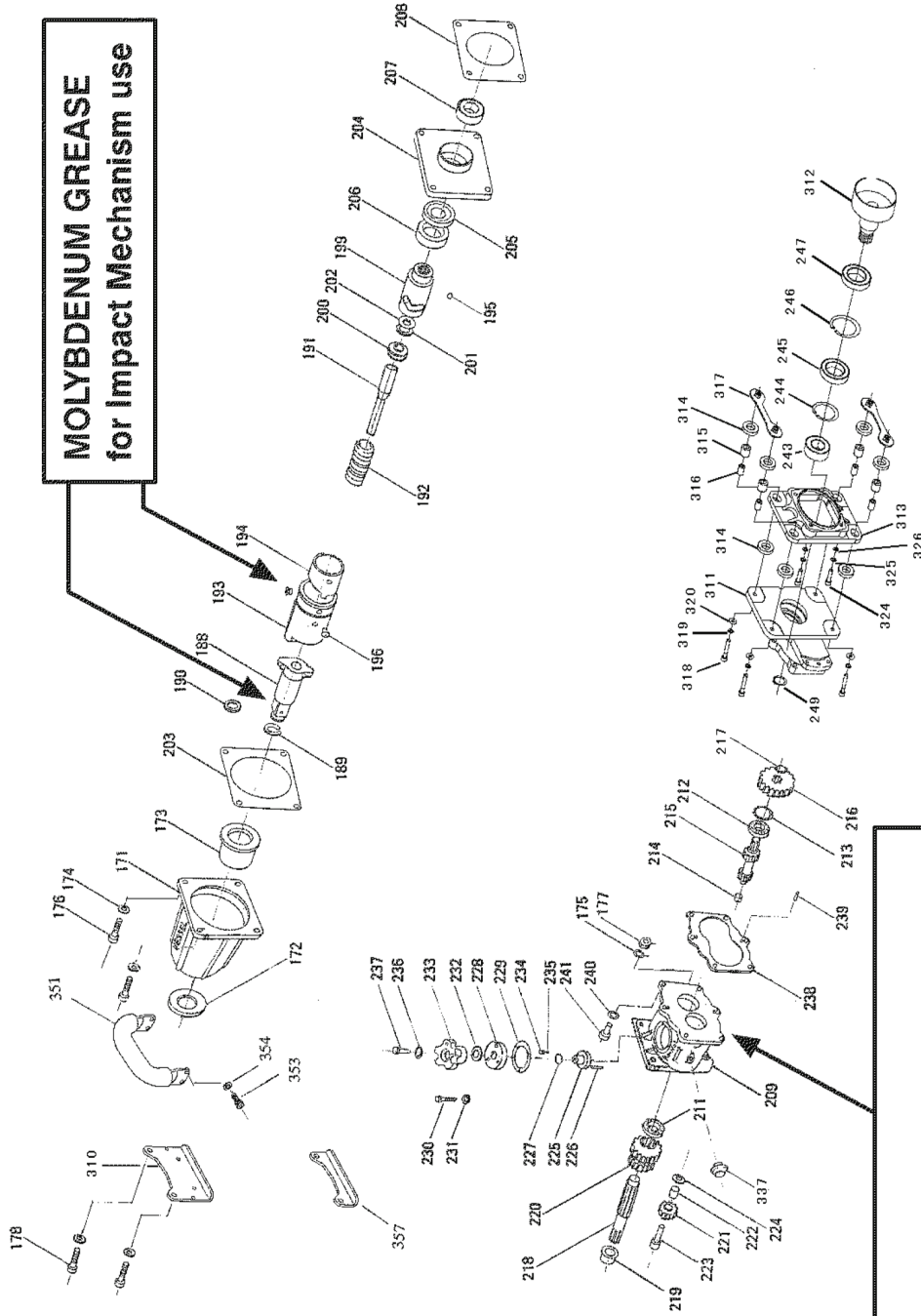


# GT-3500GE-V-US

## IMPACT MECHANISM EXPLODED DIAGRAM DRAWING & PARTS LIST



**MOLYBDENUM GREASE**  
for Impact Mechanism use

**GEAR OIL**  
The gearbox will take about 250 cc.  
APOLO OIL GEAR AP or equivalent for Automobile Gearbox.  
Make sure oil level is center or more of window.  
Sight of glass with Wrench in horizontal position.  
Refilling should be at every 3 months or at 10 hour operation.  
Depending on environment , it will be quite often as it gets dirty soon.

JDV Products, Inc.  
22-01 Raphael Street  
Fair Lawn, NJ 07410 USA



The EXCLUSIVE North American Distributor of VESSEL

Tel: 201-796-1720  
Fax: 201-796-9399  
www.vesseltools.com

# GT-3500GE-V-US

## IMPACT MECHANISM EXPLODED DIAGRAM DRAWING & PARTS LIST



REF #	EDP #	DESCRIPTION	# REQ	PRICE
171	845171	ASSY, HAMMER HSG (Inc.171~3)	1	\$364.53
<172>	845172	OIL SEAL, AG2044E1(VB35505)	1	\$4.24
<173>	845173	BUSHING, PRESS-FIT	1	\$57.82
174	845174	WASHER, JAGGED SPRING 2H-M8	4	\$1.22
175	845175	WASHER, SPRING M8	3	\$1.00
176	845176	HEX CAP BOLT, M8x45	3	\$1.06
178	845178	HEXAGON SOCKET HEAD BOLT	1	CALL
188	845188	ANVIL COMPLETE(Inc.188~90)	1	\$287.21
<189>	845189	RING, RETAINER	1	\$10.68
<190>	845190	O-RING P18, RETAINER RING	1	\$1.36
191	845191	CENTRAL SHAFT	1	\$49.58
192	845192	SPRING, RETURN	1	\$43.61
193	845193	HAMMER, COMPLT (Inc.193~4.6)	1	\$628.48
<194>	845194	CAM PLATE	1	\$167.17
195	845195	BALL, ROLLER (DIA.13/32)	2	\$2.81
<198>	845196	PLUG	4	\$18.31
199	845199	CLUTCH	1	\$211.62
200	845200	BEARING, THRUST (NSK5110)	1	\$16.01
201	845201	SPACER	1	10.85
202	845202	THRUST	1	\$10.78
203	845203	GASKET, HAMMER HOUSING	1	\$4.24
204	845204	RING FLANGE, CP (INDX. 204~7)	1	\$185.00
<205>	845205	OIL SEAL, AC1719EO(SC30527)	1	\$6.55
<206>	845206	BEARING, BALL (6007VV)	1	\$25.60
<207>	845207	BEARING, BALL (6006)	1	\$13.84
208	845208	GASKET, RING FLANGE	1	\$1.63
209	845209	GEAR CASE, CP (INDX.209~11,14)	1	\$488.75
<211>	845211	BEARING, BALL (16004)	1	\$13.50
212	845212	BEARING, BALL (16003)	1	\$12.38
213	845213	SNAP RING IRTW-35	1	\$1.32
<214>	845214	BUSHING, SELECTOR SHAFT	1	\$5.36
215	845215	SHAFT, SELECTOR	1	\$171.77

REF #	EDP #	DESCRIPTION	# REQ	PRICE
216	845216	GEAR	1	\$70.54
217	845217	SNAP RING STW-16	1	\$1.00
218	845218	SHAFT, BEARING CP (INDX.218~9)	1	\$94.89
<219>	845219	BUSHING, BEARING SHAFT	1	\$5.26
220	845220	GEAR CLUSTER	1	\$174.65
221	845221	PLANETARY GEAR, CP (INDX.221~2)	1	\$58.09
<222>	845222	BUSHING, PLANETARY GEAR	1	\$6.27
223	845223	PLANETARY PIVOT	1	\$33.88
224	845224	PLANETARY SPACER	1	\$10.78
225	845225	GEAR SELECTOR,CP (Inc.225~6)	1	\$69.79
225	845225	GEAR SELECTOR,CP (Inc.225~6)	1	\$69.79
227	845227	O-RING N14, GEAR SELECTOR	1	\$1.00
228	845228	GEAR FLANGE	1	\$38.32
229	845229	PACKING, GEAR FLANGE	1	\$1.63
230	845230	SCREW, M5x10	3	\$1.00
231	845231	WASHER, JAGGED SPRING 2L-M5	3	\$1.00
232	845232	WASHER, SPRING WW-16	1	\$1.00
233	845233	LEVER, GEAR CHANGE	1	\$85.05
234	845234	RETAINER, SPRING S3.8x0.6	1	\$1.00
235	845235	STEEL BALL	1	\$1.00
236	845236	WASHER, SPRING M6	1	\$1.00
237	845237	SCREW, M6x20	1	\$1.00
238	845238	GASKET, GEAR CASE	1	\$4.51
239	845239	PIN, (4x13.8)	2	\$1.76
240	845240	WASHER, JAGGED SPRING 2H-M6	6	\$1.00
241	845241	SCREW, M6x25	6	\$1.00
<243>	845243	BEARING, BALL (NSK16005)	1	\$15.26
<244>	845244	SNAP RING IRTW-47	1	\$2.48
<245>	845245	BEARING, BALL (MSK6907)	1	\$25.43
<246>	845246	SNAP RING IRTW-55	1	\$1.02
<247>	845247	OIL SEAL, AC2081EO	1	\$6.75
249	845249	SNAP RING STW-25	1	\$1.00

REF #	EDP #	DESCRIPTION	# REQ	PRICE
310	848310	FOOTREST	1	CALL
311	848311	CLUTCH SUPPORT FLANGE COMPLETE	1	CALL
312	848312	CLUTCH RING	1	CALL
313	848313	ENGINE SUPPORT FLANGE	1	CALL
314	848314	DAMPER RUBBER	8	CALL
315	848315	URETHANE COLOR	4	CALL
316	848316	COLOR	4	CALL
317	848317	DAMPER RUBBER RECEIVER	2	CALL
318	848318	HEXAGON SOCKET HEAD CAP SCREW (HALF SCREW)	4	CALL
319	848319	SPRING WASHER	4	CALL
320	848320	FLAT WASHER	4	CALL
324	848324	HEXAGON SOCKET HEAD BOLT	4	CALL
325	848325	SPRING WASHER	4	CALL
326	848326	SERRATED SPRING WASHERS WITH KNURLS	4	CALL
<337>	848337	OIL POT PORT	1	CALL
351	845351	D-HANDLE-ANTI-VIBRATION RUBBER CO	1	\$135.92
353	845353	SCREW, METRIC - STEEL W/ BL OX M6, BUT, 16	4	\$1.00
354	845354	WASHER, JAGGED SPRING 2H-M6	4	\$1.00
357	845357	FOOT REST, SHORT 15mm	1	\$33.91

< > Identifies built-in part, be careful when ordering

**JDV Products, Inc.**  
 22-01 Raphael Street  
 Fair Lawn, NJ 07410 USA



The EXCLUSIVE North American Distributor of VESSEL

Tel: 201-796-1720  
 Fax: 201-796-9399  
 www.vesseltools.com